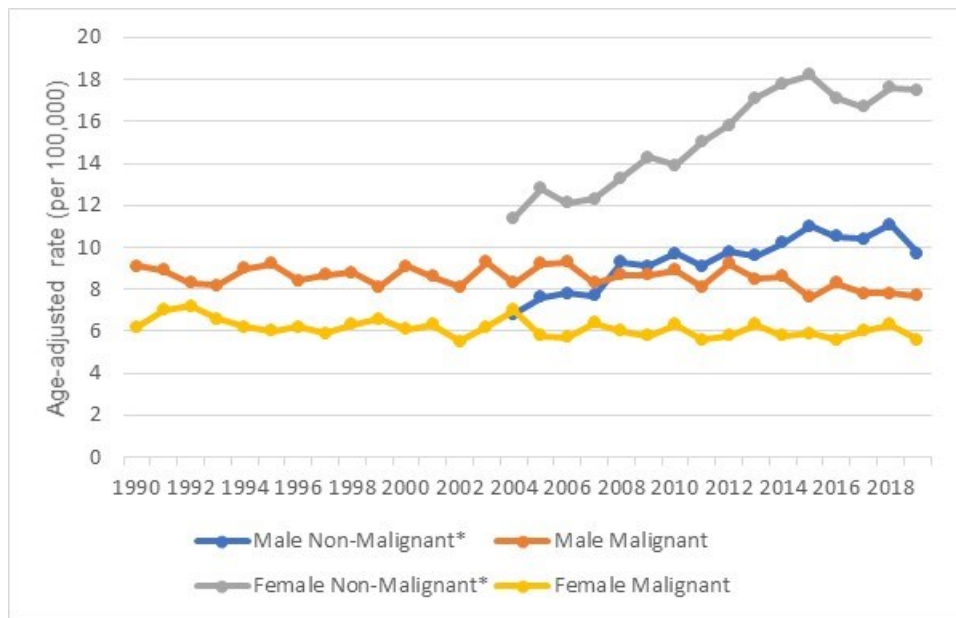




# Brain and Other Nervous System Tumors, New Jersey

<p><b>New Cases 2019*</b></p> <p><b>675 Malignant Cancers</b> <b>1,486 Non-Malignant Tumors**</b></p>	<p><b>New Deaths 2019*</b></p> <p><b>481 Deaths***</b></p>	<p><b>Incidence Rates<sup>^</sup></b> <b>2015-2019*</b></p> <p><b>Malignant Cancer: 6.8</b> <b>Non-Malignant Tumor: 14.2</b></p>	<p><b>Death Rates*** <sup>^</sup></b> <b>2015-2019*</b></p> <p><b>Malignant Cancer: 4.2</b></p>
---	--	--	---

## Trends in Incidence Rates in New Jersey, 1990-2019\* Brain and Other Nervous System, by Gender



- Incidence rates of malignant brain and other nervous system (ONS) cancer decreased slightly over the past 30 years in both men and women, while rates of non-malignant brain and ONS tumors increased after 2004, when these were first required to be reported statewide. The trends in New Jersey are similar to national trends.<sup>1</sup>
- Men had higher rates of malignant brain and ONS cancer than women, while women had higher rates of non-malignant brain and ONS tumors. The higher rates of non-malignant brain and ONS tumors in women compared to men was mainly due to higher rates of non-malignant meningiomas in women.
- Increases in non-malignant brain and ONS tumors may be due to a combination of factors: better reporting to cancer registries, improvements in diagnostic tools, and possible changes in exposures to risk factors.

Data source for cancer incidence: New Jersey State Cancer Registry February 2022 file, NJ Department of Health. Underlying mortality data were provided by the National Center for Health Statistics ([www.cdc.gov/nchs](http://www.cdc.gov/nchs)). \*Initial data report as of 2/22; rates and counts may change slightly as subsequent cancers or additional information are reported. \*\*Non-Malignant tumors include benign and borderline behavior tumors. Benign and borderline brain and other nervous system tumors were not reportable before 2004. \*\*\*Information on deaths due to non-malignant brain and ONS tumors is not available. <sup>^</sup>Average annual rate per 100,000, age-adjusted to the 2000 US standard population.

<sup>1</sup>National Cancer Institute, SEER\*Explorer. <https://seer.cancer.gov/statistics-network/explorer/application.html>

The New Jersey State Cancer Registry (NJSCR) Data Guidelines containing information on data analysis methods, race and ethnicity classification, and population and mortality data sources can be found at <https://www.state.nj.us/health/ces/cancer-researchers/surv-research/>